



Infinity Golden

5
Bedrooms

6
Bathrooms

4,562
Living Area

20,020
Lot Area



Infinity Golden

Infinity Golden

Trousdale's finest mid-century masterpiece, designed by architect Rex Lotery in 1961. This stunning mid-century modern is situated on a rare, deep, flat lot at the end of a quiet cul-de-sac. Enter through a gated motor court to your own private Garden of Eden filled with lush banana trees & landscaping, providing the utmost privacy. Cross the moat-like entrance through the front door to an open floor plan with towering ceilings in the living room, a gourmet chef's kitchen, large dining room, office/media room and stunning master with views of Century City. Steel beams and glass create a bright open floor plan and a space that give you a quintessential indoor-outdoor SoCal lifestyle. This Mid-century modern gem has been recently renovated with the best materials and highest regard for design while keeping the integrity of the original design. Step out back to the resort-like backyard entertainment oasis with over sized patio, lounge area with fire pit & pool.

Interior

Total bedrooms	5
Total bathrooms	6
Full bathrooms	6

Area & Lot

Living area	4,562sq.ft.
Lot area	20,020sq.ft.
Year built	1961
Neighborhood	Beverly hills
Architecture styles	Modern
View description	City, city lights

Exterior

Stories	1
---------	---



Infinity Golden



Infinity Golden



Infinity Golden



Infinity Golden

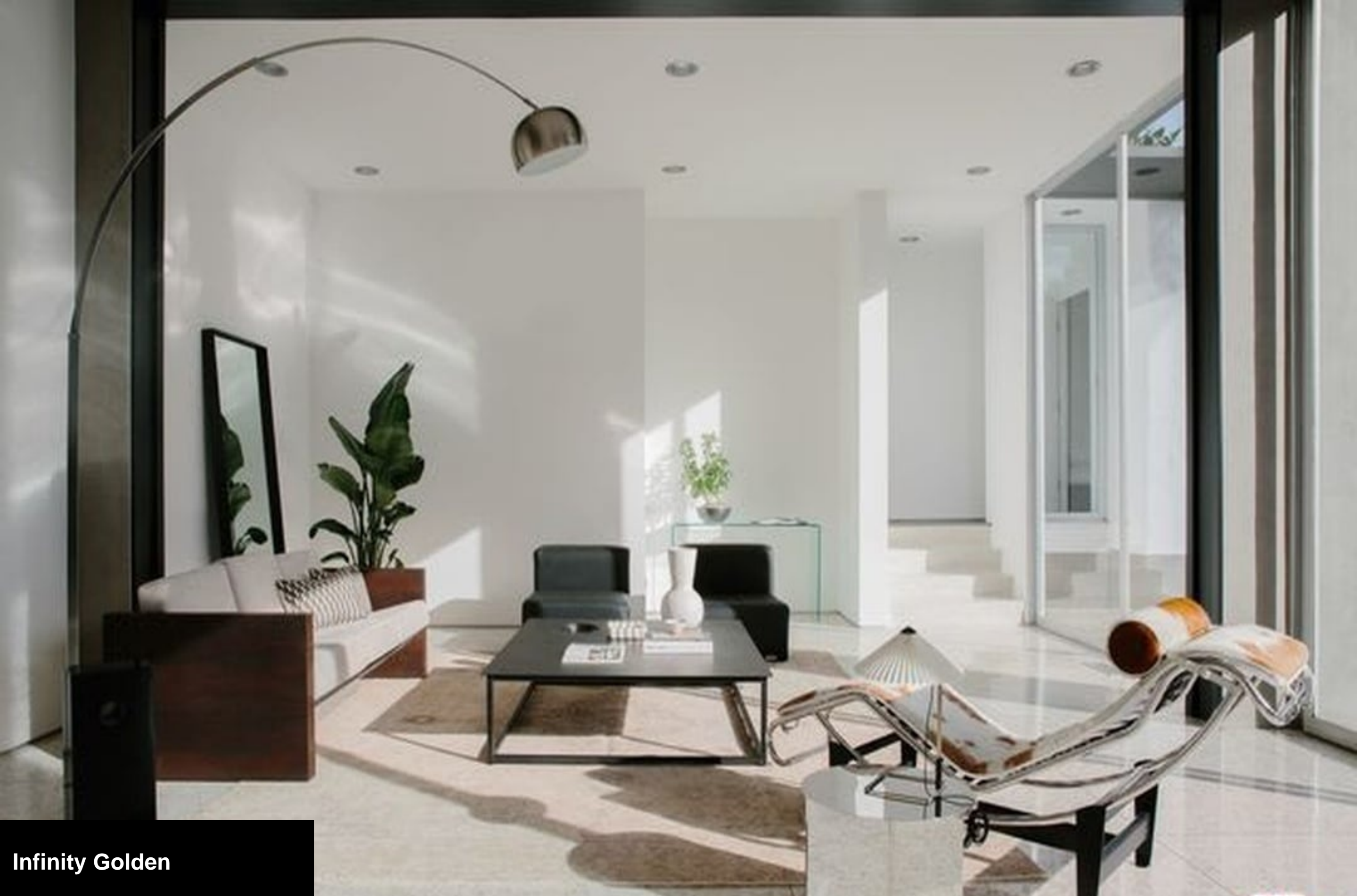


Infinity Golden





Infinity Golden



Infinity Golden



Infinity Golden



Infinity Golden



Infinity Golden





Infinity Golden



Infinity Golden



Infinity Golden



Infinity Golden





Infinity Golden



Infinity Golden



Infinity Golden



Infinity Golden



Infinity Golden



Infinity Golden



Infinity Golden



Infinity Golden



Infinity Golden

